

# Colourful Semantics In International Schools

---



Building Language & Literacy in  
International and Bilingual Schools

# Introducing Colourful Semantics In International Schools

Colourful Semantics is an evidence-based approach to improving children's language, communication, and literacy skills.



- ✓ Boosts language learning and vocabulary
- ✓ Enhances sentence formation and comprehension

Our training course was created in association with the developer of Colourful Semantics, Alison Bryan.

✉ [info@integratedtreatments.co.uk](mailto:info@integratedtreatments.co.uk)

🌐 [www.integratedtreatments.co.uk](http://www.integratedtreatments.co.uk)



# What is Colourful Semantics?

Colourful Semantics is a powerful yet simple tool that organises and enhances children's sentences by using color-coded questions to represent parts of a sentence, making language and sentence structure visual, engaging, and fun.

## How Does It Work?



- ✓ **Structured** approach that helps children break down, understand, and generate sentences by answering colour-coded questions:

**WHO?** **DOING WHAT?** **WHAT?** **WHERE?**



# Why Colourful Semantics Works in International Schools

Colourful Semantics is exceptionally effective in international and bilingual school contexts based on its adaptability and strengths in enhancing language and literacy across diverse settings.



## **Adaptable and Inclusive**

Customisable for languages, curricula, and needs of international schools and diverse learners.



## **Visual and Engaging**

Colour-coded approach supports diverse learners with clear, consistent visuals.



## **Cross-Curricular Benefits**

Supports literacy across subjects and integrates into school's learning pathways.



## **Evidence-Based and Structured**

Draws on robust UK research, ensuring effective, data-informed practice.

A versatile tool for building language and literacy skills in multilingual classrooms.





# Steps to Introduce Colourful Semantics in Your International School

## 1. Assess



Conduct initial assessments tailored to your school's needs.

## 2. Train



Receive expert training online tailored to International schools.

## 3. Implement



Launch Colourful Semantics activities in classroom settings.

## 4. Review



Regularly review progress to effectively plan next steps.

Integrated Treatment Services provides bespoke, whole-school training online, ensuring your school is ready to implement Colourful Semantics across all appropriate year groups and language levels.

Our approach includes access to comprehensive resources, examples and ongoing support to empower educators and ensure successful, sustainable implementation.



# Adapting Colourful Semantics to Suit Your Bilingual and International School

We customise Colourful Semantics to meet the specific language and curriculum needs of your school.

## Key Customisation Strategies



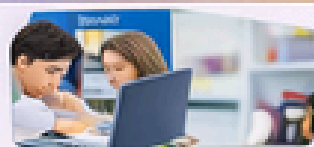
### Language Adaptation

Translate and adapt resources to fit the primary languages taught in your school.



### Curriculum Alignment

Tailor activities to align with IB, British, American, and other international school curricula.



### Customisable Resources

Create resources that reflect your specific curriculum and student needs.

This ensures that Colourful Semantics is seamlessly integrated into daily lessons and subjects, fostering effective language and literacy skills.

Fully adaptable for bilingual, trilingual schools and varying levels of English proficiency.



**Integrated**  
Treatment Services  
Client-centred Therapy



# A Scalable Pathway for International Schools

## Level 1

### Introductory Training & Support



- ✓ Introductory training and follow-up training
- ✓ Access to classroom resources and assessment tools
- ✓ One-on-one review session to solve practical issues

## Level 2

### Enhanced Training & Support



- ✓ Introductory training and follow-up training
- ✓ Resources and assessment tools
- ✓ Termly practical problem solving sessions to fully integrate and continually support staff

## Level 3

### Advanced & Bespoke Support



- ✓ Introductory training and follow-up training
- ✓ Resources and assessment tools to fully integrate and support staff
- ✓ In-depth assessment and analysis and bespoke setting planning based on student assessment results

## How We Implement Practice



Assess → Select → Implement → Sustain



**Integrated  
Treatment Services**  
Client-centred Therapy

# Level 1:

## Introductory Training & Support Package

---



### Purpose

To provide an introductory training and follow-up support to establish the foundations of Colourful Semantics in your school.

#### What this includes:

- ✓ Introductory training session
- ✓ Follow-up implementation training
- ✓ Access to classroom resources and assessment tools
- ✓ One review session to solve practical issues and find solutions

#### Includes:

- ✓ Introductory training session 
- ✓ Follow-up implementation training
- ✓ One term-time practical problem-solving review session 

### Commitment

- 3-month implementation cycle
- Online delivery (with optional in-person delivery)



**Please contact us** to discuss your school's needs and priorities, and to request the full **Level 1** brochure.

✉ [info@integratedtreatments.co.uk](mailto:info@integratedtreatments.co.uk)

🌐 [www.integratedtreatments.co.uk](http://www.integratedtreatments.co.uk)

# Level 2: Enhanced Training & Support Package



## Purpose

To support your school in fully integrating Colourful Semantics into the curriculum with enhanced, practice-based termly support.

### What this includes:

- ✓ Introductory training session
- ✓ Follow-up implementation training
- ✓ Access to classroom resources and assessment tools
- ✓ One review session to solve practical issues and find solutions

### Includes:

- ✓ Introductory training session sessions 
- ✓ Termly problem-solving sessions to fully integrate and support staff 
- ✓ Resources and assessment tools

## Commitment

- 3-month, 12-month implementation cycle
- Online delivery (with optional in-person delivery)



**Please contact us** to discuss your school's needs and priorities, and to request the full **Level 2** brochure:

✉ [info@integratedtreatments.co.uk](mailto:info@integratedtreatments.co.uk)

🌐 [www.integratedtreatments.co.uk](http://www.integratedtreatments.co.uk)

# Level 3: Advanced & Bespoke Support Package



## Purpose

To equip in-house leaders to sustain and expand the use of Colourful Semantics while customising support based termly support.

### What this includes:

- ✓ Introductory training session and follow-up training
- ✓ Access to classroom resources and assessment tools
- ✓ Termly practical problem-solving sessions to fully integrate and continually support staff
- ✓ Expert assessment and detailed analysis of student progress

### Includes:

- ✓ Introductory training and follow-up training 
- ✓ Termly problem-solving sessions to fully integrate and support staff 
- ✓ Resources and assessment tools
- ✓ Bespoke setting planning based on assessment results

## Commitment

- Long-term, 12-month implementation cycle
- Ongoing and advanced implementation support
- In-depth analysis and tailored action plans



**Please contact us** to discuss your school's needs and priorities, and to request the **full Level 3** brochure.

✉ [info@integratedtreatments.co.uk](mailto:info@integratedtreatments.co.uk)

🌐 [www.integratedtreatments.co.uk](http://www.integratedtreatments.co.uk)

# Compare the Three Pathways

Colourful Semantics Implementation Pathways for International Schools

Level of Support	Introductory Training & Support	Enhanced Training & Support	Advanced & Bespoke Support
	3-month cycle	12-month cycle	Ongoing cycle
Introductory Training	✓ Whole-staff introduction	✓ Whole-staff introduction and reinforcement	✓ Whole-staff, leadership focused introduction
Follow-Up Training	✓ Single follow-up session	✓ Ongoing follow-up sessions	✓ Bespoke follow-up tailored to school priorities
Resources & Tools	✓ Core classroom resources	✓ Extended resources for consistency	✓ Bespoke resources adapted to setting
Assessment	✓ Advice on how to assess	✓ Progressive assessment analysis	✓ Bespoke resources adapted to strategic analysis
Practical Problem-Solving Support	✓ 1 follow-up practical problem-solving sessions	✓ Termly practical problem-solving	✓ Strategic problem-solving linked to outcomes aligned to assessment data
Ongoing Implementation	✓ Guided support to establish good practice	✓ Embedded support to build capacity	✓ Strategic and sustained support
Leadership & Planning	✓ Guided support to build good	✓ Implementation planning with key staff	✓ Partnership and strategic planning
Overall Level of Support	✓ Guidance on assessment	✓ Enhanced Tracking of progress	✓ Enhanced Bespoke outcome monitoring
Overall Level of Support	✓✓ Light	✓✓✓ Enhanced	✓✓✓✓✓ Bespoke



Please contact us to discuss your school's needs and priorities, and to request the full **Level 1**, **Level 2**, and **Level 3** brochures.



**Integrated  
Treatment Services**  
Client-centred Therapy

✉ [info@integratedtreatments.co.uk](mailto:info@integratedtreatments.co.uk)

🌐 [www.integratedtreatments.co.uk](http://www.integratedtreatments.co.uk)

# Flexible Delivery Options

Integrated Treatment Services offers flexible, high-quality delivery models to ensure Colourful Semantics can be successfully implemented in international school settings, regardless of location, time zone or curriculum model.

Our delivery approach maintains the integrity of the UK evidence-based framework, while adapting to the practical realities of international schools and school groups.

## Our Flexible Delivery Model



### Online Delivery

Live, interactive training delivered remotely, enabling schools to access specialist expertise without geographical barriers. Sessions are adapted to suit international time zones and staff availability.



### In-Person Delivery

On-site training delivered within your school to support immersive, whole-staff, engagement and practical modeling of Colourful Semantics in classrooms and intervention settings.



### Hybrid Delivery

A blended approach combining initial in-person or live online training with ongoing remote support and implementation review over time.

## How It Works:

- ✓ **Plan:** Delivery model agreed in collaboration with school leadership
- ✓ **Deliver:** Training delivered online, in-person.
- ✓ **Support:** Ongoing professional guidance to embed practice consistently.
- ✓ **Review:** Regular implementation check-ins to monitor and refine development approach.

### Hybrid Delivery Options

- ✓ Bespoke in-person onsite training
- ✓ Live, online virtual sessions
- ✓ Tailored initial support to fit your school's needs



# Supporting International Education Worldwide

Integrated Treatment Services works in partnership with a wide range of international education providers, supporting schools to embed Colourful Semantics as a whole-school, sustainable approach to language, communication and literacy.

Our work is grounded in the UK education and speech and language therapy model, while being carefully adapted to meet the needs of diverse international contexts.

## Who We Support

OUR INTERNATIONAL REACH				
				
<b>British International Schools</b>	<b>IB, International and American Curriculum Schools</b>	<b>International School Groups</b>	<b>Specialist SEN &amp; Inclusion Provisions</b>	<b>Bilingual &amp; Multilingual Schools</b>
Schools following the British curriculum abroad	Schools following diverse international curricula	Networks of international schools within organization or group	Schools and centres supporting language & communication needs	Schools with pupils learning English as an Additional Language (EAL)

By working collaboratively with school leaders, SENDCos and teaching staff, we ensure Colourful Semantics is effectively tailored to each school's specific context and goals.

# Measuring Impact & Monitoring Success for International Schools

Effective implementation of **Colourful Semantics** in international schools requires a rigorous, Systematic approach to measuring impact and progress over time. Integrated Treatment Services provides international school partners with the tools and expertise to monitor, evaluate and sustain outcomes for all learners.

## Our Approach



## Monitoring Success

International school leaders can use structured monitoring systems to track impact, demonstrate progress, and make informed decisions about language, literacy and inclusion.

- ✓ Identify and respond to language and communication needs effectively.
- ✓ See clear, measurable progress across spoken language, literacy and inclusion.
- ✓ Report outcomes to parents, governing bodies and accrediting organisations with confidence.
- ✓ Make informed, data driven decisions about teaching inclusion and continued support.

Integrated Treatment Services helps international schools build a culture of evidence-based practice, where *Colourful Semantics* success is not only visible but measurable and reportable.

# Get in Touch

 +44 (0) 844 800 4001

 [info@integratedtreatments.co.uk](mailto:info@integratedtreatments.co.uk)

 [www.integratedtreatmentservices.com](http://www.integratedtreatmentservices.com)

Contact us to explore how *Colourful Semantics* can benefit your international school, network or group.

[Book a Free Consultation](#)

